

Double tube linear actuators

with right or left hand thread, single slider

SPECIFICATION

Types

- Type **R1**: Right hand thread, shaft journal at one end
- Type **R2***: Right hand thread, shaft journal at both ends
- Type **L1***: Left hand thread, shaft journal at one end
- Type **L2***: Left hand thread, shaft journal at both ends

* normally not available from stock

Guide tube DIN 2391

Steel chrome-plated **SCR**

End pieces / Slider

Aluminium

plastic coated

black, RAL 9005, textured finish

Fixing surface / mounting surface

machined, blank

Spindle with trapezoidal thread

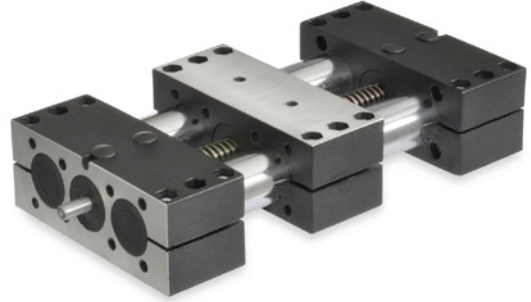
- Steel, blank
- with ball-bearing
- Positioning accuracy ± 0.2 mm/300 mm travel

Follower nut, gun metal

Cylinder head screw DIN 912 /

Hexagon nuts DIN 985

Steel, zinc plated



INFORMATION

In addition to the standard travel lengths specified in the above table for the double tube linear actuator GN 491 any length inside the maximum length is available.

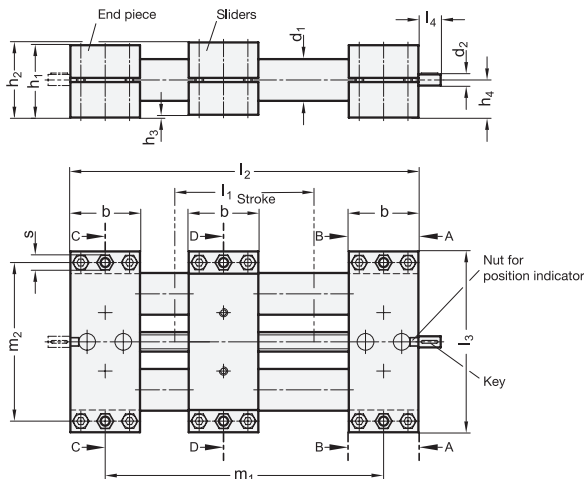
In order to measure the movement and positioning of the sliders, digital position indicators can be added.

ACCESSORY

- Installation kits GN 491.1 (see page 1955) for position indicators

TECHNICAL INFORMATION

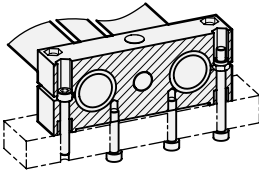
- Mounting facilities of end pieces (see page 1950)
- Technical information / Load data of Double tube linear actuators (see page 1946)



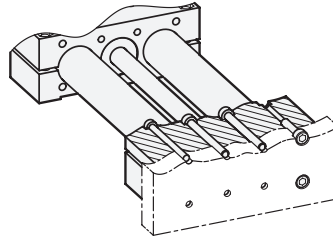


Mounting facilities of the end pieces

Horizontal
with screws for thread d4 or bore d5

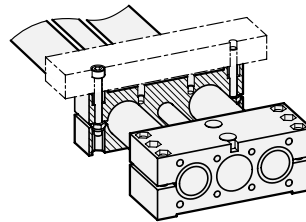
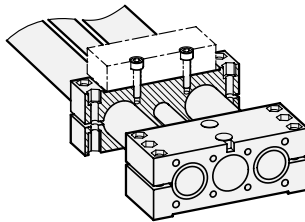


Vertical
From outside, with screws for thread d3
From inside, with screws for bore d6
From inside, with screws for bore d5 / d7



Mounting facilities at the slider

Mounting with screws for thread d4 or bore d5



Assembly of position indicator and handwheel

Useage of installation kit, position indicator and handwheel, see table

