

Spoked handwheels

Aluminium, black, plastic coated

SPECIFICATION

Types

- Version **A**: without handle
- Version **R**: with revolving handle

Bore codes

- Version **B**: without keyway
- Version **K**: with keyway

Aluminium

- Hub machined
- Rim turned

Rim concentric and square to bore < 0.4

Body plastic coated
black, textured finish

Cylindrical Revolving handles GN 798 (see page 577)

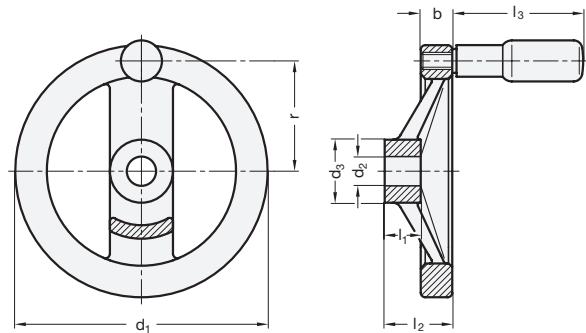
Plastic, Technopolymer
black, matt

TECHNICAL INFORMATION

- Keyway DIN 6885 (see page A16)
- Cross holes GN 110 (see page A17)
- ISO-Fundamental Tolerances (see page A21)

*Complete with Bore codes of the Handwheel (B or K)

B without keyway
K with keyway



GN 324-A

Description	d1	d2 H7	d3	b	l1	l2	⚖️
GN 324-125-*12-A	125	12	31	15	18	33	316
GN 324-125-*14-A	125	14	31	15	18	33	310
GN 324-140-*14-A	140	14	36	16.5	19	36	408
GN 324-140-*16-A	140	16	36	16.5	19	36	400
GN 324-160-*14-A	160	14	36	18	20	39	540
GN 324-160-*16-A	160	16	36	18	20	39	530
GN 324-200-*18-A	200	18	42	20.5	24	45	911
GN 324-200-*20-A	200	20	42	20.5	24	45	894
GN 324-250-*22-A	250	22	48	23	28	51	1503
GN 324-250-*26-A	250	26	48	23	28	51	1497

GN 324-R

Description	d1	d2 H7	d3	b	l1	l2	l3	r	Ø Handle	⚖️
GN 324-125-*12-R	125	12	31	15	18	33	61.5	54	22	390
GN 324-125-*14-R	125	14	31	15	18	33	61.5	54	22	380
GN 324-140-*14-R	140	14	36	16.5	19	36	76.5	61	24	510
GN 324-140-*16-R	140	16	36	16.5	19	36	76.5	61	24	490
GN 324-160-*14-R	160	14	36	18	20	39	76.5	71	24	635
GN 324-160-*16-R	160	16	36	18	20	39	76.5	71	24	620
GN 324-200-*18-R	200	18	42	20.5	24	45	86.5	89	25	1036
GN 324-200-*20-R	200	20	42	20.5	24	45	86.5	89	25	1019
GN 324-250-*22-R	250	22	48	23	28	51	86.5	113	25	1628
GN 324-250-*26-R	250	26	48	23	28	51	86.5	113	25	1600

Weight type B

