

## Spoked handwheels

Aluminium, blank, rim polished

### SPECIFICATION

#### Types

- Type **A**: without handle
- Type **R**: with revolving handle

#### Bore codes

- Version **B**: without keyway
- Version **K**: with keyway

Aluminium

- Hub machined
- Rim turned

Rim concentric and square to bore < 0.4

Wheel body

- Rim high-polished
- unmachined body matt shot-blasted

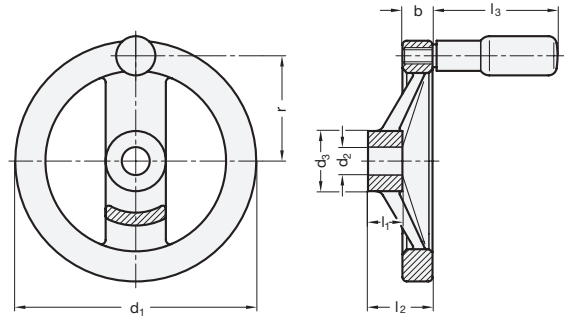
Cylindrical Revolving handles GN 798 (see page 577)

Plastic, Technopolymer  
black, matt



### TECHNICAL INFORMATION

- Keyway P9 DIN 6885 (see page A16)
- Cross holes GN 110 (see page A17)
- ISO-Fundamental Tolerances (see page A21)



\* Complete with Bore codes of the Handwheel (B or K)

**B** without keyway      **K** with keyway

### GN 322-A

Description	d1	d2 H7	d3	b	l1	l2	ΔΔ
GN 322-125-*12-A	125	12	31	15	18	33	311
GN 322-125-*14-A	125	14	31	15	18	33	308
GN 322-140-*14-A	140	14	36	16.5	19	36	411
GN 322-140-*16-A	140	16	36	16.5	19	36	394
GN 322-160-*14-A	160	14	36	18	20	39	539
GN 322-160-*16-A	160	16	36	18	20	39	530
GN 322-200-*18-A	200	18	42	20.5	24	45	892
GN 322-200-*20-A	200	20	42	20.5	24	45	885
GN 322-250-*22-A	250	22	48	23	28	51	1478
GN 322-250-*26-A	250	26	48	23	28	51	1454

### GN 322-R

Description	d1	d2 H7	d3	b	l1	l2	l3	r	Ø Handle	ΔΔ
GN 322-125-*12-R	125	12	31	15	18	33	61.5	54	22	396
GN 322-125-*14-R	125	14	31	15	18	33	61.5	54	22	393
GN 322-140-*14-R	140	14	36	16.5	19	36	76.5	61	24	411
GN 322-140-*16-R	140	16	36	16.5	19	36	76.5	61	24	405
GN 322-160-*14-R	160	14	36	18	20	39	76.5	71	24	613
GN 322-160-*16-R	160	16	36	18	20	39	76.5	71	24	610
GN 322-200-*18-R	200	18	42	20.5	24	45	86.5	89	25	1017
GN 322-200-*20-R	200	20	42	20.5	24	45	86.5	89	25	1010
GN 322-250-*22-R	250	22	48	23	28	51	86.5	113	25	1603
GN 322-250-*26-R	250	26	48	23	28	51	86.5	113	25	1579

Weight type B

