



6-280.03 Cams for Heavy Duty Latches

RoHS
WEEE

IP
65

Advantages

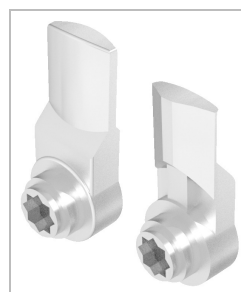
- 8 x 45° adjustable.

Materials

- **Cams:** zinc die, zinc plated

Remarks

Handle outside see product system 6-280.
Handle inside see product system 6-280.01.
Shafts see product system 6-280.02.
Bezels and sealing kits see product system 6-280.05.



Cams

	Part Number	Height H	Length	Delivery Unit
e1)	232-0501.00-00000	8 mm	60 mm	1 pcs.
e2)	232-0502.00-00000	16 mm	65 mm	1 pcs.

* Specific accessories

- c1)- 6-280.05 **Bezels for Heavy Duty Latches**
- c6)
- b)-b1) 6-280.01 **Handle Inside, for Heavy Duty Latch System**
- a)-a3) 6-280 **Heavy Duty Latch System for HVAC Applications**
- d) 6-280.02 **Shafts for Heavy Duty Latches**

