

Safety Handwheels

Aluminum, with Needle Bearing

SPECIFICATION

Types

- Type **A**: Without handle
- Type **D**: With revolving steel handle

Coding

- Version **ZI**: Engage by pulling
- Version **DR**: Engage by pushing

Wheel body

- Aluminum
- Hub machined
- Wheel rim
 - Turned
 - Radial and axial runout < 0,4
 - Wheel rim high-polished
 - Unmachined body matte shot-blasted

Coupling attachment GN 000.5 (see page 185) with needle bearing

- Steel
- Hardened
- Bearing surfaces ground

Revolving handle GN 598 (see page 1092)

- Steel
- Powder coated
 - Black, textured finish
- Spindle steel
 - Zinc plated, blue passivated

INFORMATION

While not actuated, safety handwheels GN 322.5 do not transmit the rotational movement of the shaft to the wheel body. To drive and adjust, the clutch is engaged by pushing or pulling, depending on the code. When released, the handwheel is disengaged by spring force. Type D ergonomically transmits fast adjustment movements via the revolving cylindrical handle. Precise adjustments are made via the wheel rim.

ACCESSORY

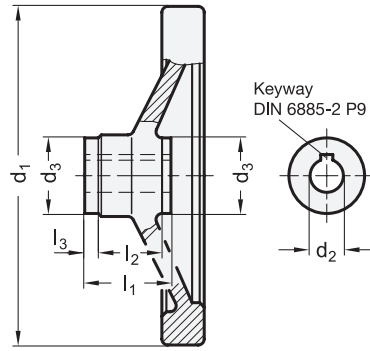
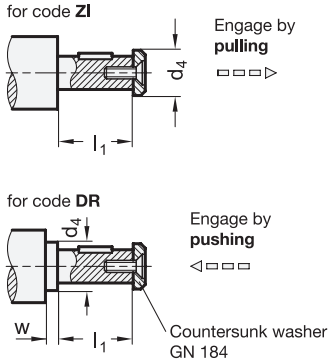
- GN 184 Countersunk Washers (for Axial Fixing) (see page 971)

TECHNICAL INFORMATION

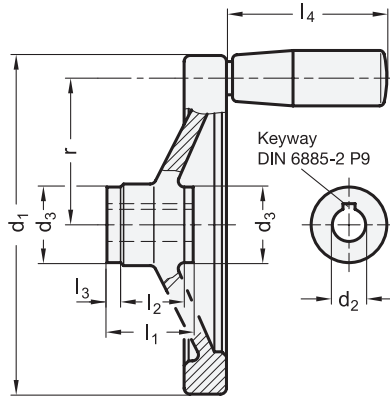
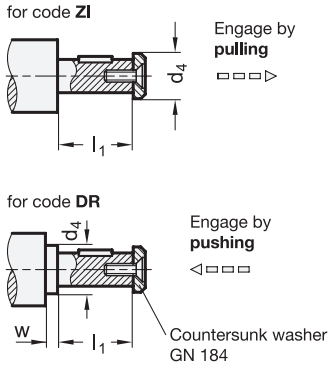
- More Information to Safety Handwheels (see page 133)
- Keyway P9 DIN 6885-2 (see page A16)
- ISO-Fundamental Tolerances (see page A21)



Shaft design



Shaft design



* Complete with

ZI Engage by pulling
DR Engage by pushing

GN 322.5-A

Description	d ₁	d ₂ H7 Bore with keyway	d ₃	d ₄ max.	l ₁	l ₂	l ₃	l ₄ ≈	r	w min.	∅ Handle GN 598	Coupling GN 000.5 Nominal size	⚖
GN 322.5-125-K12-A-*	125	K 12	29	17	42	18	12	67.5	54	4	23	1	414
GN 322.5-140-K12-A-*	140	K 12	29	17	42	19	12	67.5	61	4	23	1	522
GN 322.5-140-K14-A-*	140	K 14	33	21	48	19	14	67.5	61	4	23	2	570
GN 322.5-160-K14-A-*	160	K 14	33	21	48	20	14	82.5	71	4	26	2	686
GN 322.5-200-K18-A-*	200	K 18	39	26	50	24	13	82.5	89	4	26	3	1117
GN 322.5-250-K22-A-*	250	K 22	46	30	54	28	13	92.5	113	4	28	4	1781

GN 322.5-D

Description	d ₁	d ₂ H7 Bore with keyway	d ₃	d ₄ max.	l ₁	l ₂	l ₃	l ₄ ≈	r	w min.	∅ Handle GN 598	Coupling GN 000.5 Nominal size	⚖
GN 322.5-125-K12-D-*	125	K 12	29	17	42	18	12	67.5	54	4	23	1	597
GN 322.5-140-K12-D-*	140	K 12	29	17	42	19	12	67.5	61	4	23	1	705
GN 322.5-140-K14-D-*	140	K 14	33	21	48	19	14	67.5	61	4	23	2	753
GN 322.5-160-K14-D-*	160	K 14	33	21	48	20	14	82.5	71	4	26	2	978
GN 322.5-200-K18-D-*	200	K 18	39	26	50	24	13	82.5	89	4	26	3	1409
GN 322.5-250-K22-D-*	250	K 22	46	30	54	28	13	92.5	113	4	28	4	2173

Weight coding ZI

