

## Gear Levers

### Zinc Die Casting

#### SPECIFICATION

##### Bore codes

- Version **B**: Without keyway, without clamping
- Version **BK**: Without keyway, with clamping
- Version **K**: With keyway, without clamping
- Version **KK**: With keyway, with clamping
- Version **V**: With double square, without clamping
- Version **VK**: With double square, with clamping

##### Coding (cover)

- Coding **N**: Plain

##### Handle

Zinc die casting **ZD**

- Powder coated
  - Silver, RAL 9006, textured finish **SR**
  - Black, RAL 9005, textured finish **SW**
- Keyway DIN 6885-1
  - P9 for type K
  - JS9 for type KK

##### Cover

Plastic, polyamide (PA)

- Removable
- Gray for SR
- Black for SW

##### Socket cap screw ISO 4762

for bore code BK / KK / VK

Stainless steel



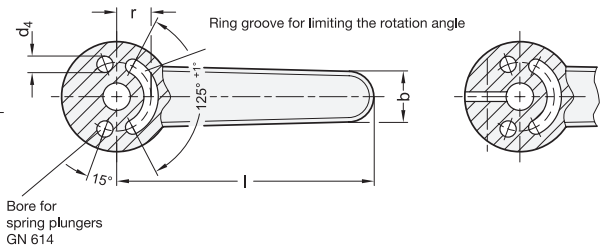
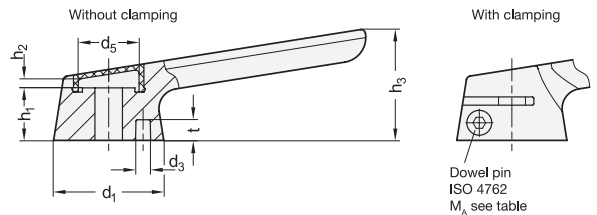
#### INFORMATION

Gear levers GN 210 are used to drive shafts, such as for switching gears and engaging clutches or operating valves and latches.

The torque is transmitted through a positive connection either via a parallel key or a square drive. This ensures a defined angular position between the shaft and the handle. The angular position can be freely defined using gear levers with smooth bore.

Gear levers with parallel key or square drive can be secured axially with a countersunk washer. The versions with clamping transmit torques and forces with zero backlash via frictional locking and secure the hub axially. They are easy to install and allow for subsequent adjustment.

The rotational angle of the gear levers can be held with spring plungers or limited with dowel pins. An application-specific rotational angle can be defined by using two dowel pins.

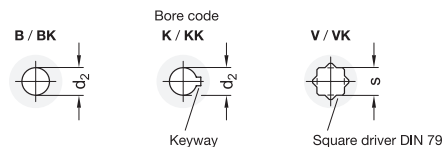


#### ACCESSORY

- DIN 6885 Parallel Keys (see page 995)
- GN 184 / GN 184.5 Countersunk Washers (see page 971)
- GN 614 Spring Plungers (see page 847)

#### TECHNICAL INFORMATION

- Technical Instructions (see page )
- Keyways DIN 6885-1 (see page A16)
- Squares DIN 79 (see page A16)
- ISO-Fundamental Tolerances (see page A21)
- Plastic Characteristics (see page A2)



\* Complete with

SW SR  
RAL9005 RAL9006

## GN 210-B

| Description          | d <sub>1</sub> | d <sub>2</sub> H7 | b    | d <sub>3</sub> +0.2 | d <sub>4</sub> | d <sub>5</sub> | h <sub>1</sub> -0.2 | h <sub>2</sub> | h <sub>3</sub> | Length l | r    | t   | ⚖   |
|----------------------|----------------|-------------------|------|---------------------|----------------|----------------|---------------------|----------------|----------------|----------|------|-----|-----|
| GN 210-32-B8-N-ZD-*  | 32             | 8                 | 15   | 4.2                 | 4              | 18.8           | 14.9                | 3.4            | 36             | 91.5     | 10   | 6   | 120 |
| GN 210-32-B10-N-ZD-* | 32             | 10                | 15   | 4.2                 | 4              | 18.8           | 14.9                | 3.4            | 36             | 91.5     | 10   | 6   | 120 |
| GN 210-40-B10-N-ZD-* | 40             | 10                | 18.5 | 5.2                 | 5              | 23.6           | 19.1                | 2.8            | 44             | 114      | 12.5 | 7.5 | 232 |
| GN 210-40-B12-N-ZD-* | 40             | 12                | 18.5 | 5.2                 | 5              | 23.6           | 19.1                | 2.8            | 44             | 114      | 12.5 | 7.5 | 232 |
| GN 210-50-B12-N-ZD-* | 50             | 12                | 23   | 6.2                 | 6              | 30.5           | 23.6                | 4              | 55             | 142      | 16   | 9   | 455 |
| GN 210-50-B14-N-ZD-* | 50             | 14                | 23   | 6.2                 | 6              | 30.5           | 23.6                | 4              | 55             | 142      | 16   | 9   | 455 |

## GN 210-BK

| Description           | d <sub>1</sub> | d <sub>2</sub> H7 | b    | d <sub>3</sub> +0.2 | d <sub>4</sub> | d <sub>5</sub> | h <sub>1</sub> -0.2 | h <sub>2</sub> | h <sub>3</sub> | Length l | r    | t   | M <sub>A</sub> max. in Nm | ⚖   |
|-----------------------|----------------|-------------------|------|---------------------|----------------|----------------|---------------------|----------------|----------------|----------|------|-----|---------------------------|-----|
| GN 210-32-BK8-N-ZD-*  | 32             | 8                 | 15   | 4.2                 | 4              | 18.8           | 14.9                | 3.4            | 36             | 91.5     | 10   | 6   | 2.9                       | 117 |
| GN 210-32-BK10-N-ZD-* | 32             | 10                | 15   | 4.2                 | 4              | 18.8           | 14.9                | 3.4            | 36             | 91.5     | 10   | 6   | 2.9                       | 117 |
| GN 210-40-BK10-N-ZD-* | 40             | 10                | 18.5 | 5.2                 | 5              | 23.6           | 19.1                | 2.8            | 44             | 114      | 12.5 | 7.5 | 5.7                       | 229 |
| GN 210-40-BK12-N-ZD-* | 40             | 12                | 18.5 | 5.2                 | 5              | 23.6           | 19.1                | 2.8            | 44             | 114      | 12.5 | 7.5 | 5.7                       | 229 |
| GN 210-50-BK12-N-ZD-* | 50             | 12                | 23   | 6.2                 | 6              | 30.5           | 23.6                | 4              | 55             | 142      | 16   | 9   | 10                        | 449 |
| GN 210-50-BK14-N-ZD-* | 50             | 14                | 23   | 6.2                 | 6              | 30.5           | 23.6                | 4              | 55             | 142      | 16   | 9   | 10                        | 449 |

## GN 210-K

| Description          | d <sub>1</sub> | d <sub>2</sub> H7 | b    | d <sub>3</sub> +0.2 | d <sub>4</sub> | d <sub>5</sub> | h <sub>1</sub> -0.2 | h <sub>2</sub> | h <sub>3</sub> | Length l | r    | t   | ⚖   |
|----------------------|----------------|-------------------|------|---------------------|----------------|----------------|---------------------|----------------|----------------|----------|------|-----|-----|
| GN 210-32-K8-N-ZD-*  | 32             | 8                 | 15   | 4.2                 | 4              | 18.8           | 14.9                | 3.4            | 36             | 91.5     | 10   | 6   | 119 |
| GN 210-32-K10-N-ZD-* | 32             | 10                | 15   | 4.2                 | 4              | 18.8           | 14.9                | 3.4            | 36             | 91.5     | 10   | 6   | 119 |
| GN 210-40-K10-N-ZD-* | 40             | 10                | 18.5 | 5.2                 | 5              | 23.6           | 19.1                | 2.8            | 44             | 114      | 12.5 | 7.5 | 232 |
| GN 210-40-K12-N-ZD-* | 40             | 12                | 18.5 | 5.2                 | 5              | 23.6           | 19.1                | 2.8            | 44             | 114      | 12.5 | 7.5 | 232 |
| GN 210-50-K12-N-ZD-* | 50             | 12                | 23   | 6.2                 | 6              | 30.5           | 23.6                | 4              | 55             | 142      | 16   | 9   | 454 |
| GN 210-50-K14-N-ZD-* | 50             | 14                | 23   | 6.2                 | 6              | 30.5           | 23.6                | 4              | 55             | 142      | 16   | 9   | 454 |

## GN 210-KK

| Description           | d <sub>1</sub> | d <sub>2</sub> H7 | b    | d <sub>3</sub> +0.2 | d <sub>4</sub> | d <sub>5</sub> | h <sub>1</sub> -0.2 | h <sub>2</sub> | h <sub>3</sub> | Length l | r    | t   | M <sub>A</sub> max. in Nm | ⚖   |
|-----------------------|----------------|-------------------|------|---------------------|----------------|----------------|---------------------|----------------|----------------|----------|------|-----|---------------------------|-----|
| GN 210-32-KK8-N-ZD-*  | 32             | 8                 | 15   | 4.2                 | 4              | 18.8           | 14.9                | 3.4            | 36             | 91.5     | 10   | 6   | 2.9                       | 117 |
| GN 210-32-KK10-N-ZD-* | 32             | 10                | 15   | 4.2                 | 4              | 18.8           | 14.9                | 3.4            | 36             | 91.5     | 10   | 6   | 2.9                       | 117 |
| GN 210-40-KK10-N-ZD-* | 40             | 10                | 18.5 | 5.2                 | 5              | 23.6           | 19.1                | 2.8            | 44             | 114      | 12.5 | 7.5 | 5.7                       | 228 |
| GN 210-40-KK12-N-ZD-* | 40             | 12                | 18.5 | 5.2                 | 5              | 23.6           | 19.1                | 2.8            | 44             | 114      | 12.5 | 7.5 | 5.7                       | 228 |
| GN 210-50-KK12-N-ZD-* | 50             | 12                | 23   | 6.2                 | 6              | 30.5           | 23.6                | 4              | 55             | 142      | 16   | 9   | 10                        | 448 |
| GN 210-50-KK14-N-ZD-* | 50             | 14                | 23   | 6.2                 | 6              | 30.5           | 23.6                | 4              | 55             | 142      | 16   | 9   | 10                        | 448 |

## GN 210-V

| Description          | d <sub>1</sub> | s H11 | b    | d <sub>3</sub> +0.2 | d <sub>4</sub> | d <sub>5</sub> | h <sub>1</sub> -0.2 | h <sub>2</sub> | h <sub>3</sub> | Length l | r    | t   | ⚖   |
|----------------------|----------------|-------|------|---------------------|----------------|----------------|---------------------|----------------|----------------|----------|------|-----|-----|
| GN 210-32-V8-N-ZD-*  | 32             | 8     | 15   | 4.2                 | 4              | 18.8           | 14.9                | 3.4            | 36             | 91.5     | 10   | 6   | 117 |
| GN 210-32-V10-N-ZD-* | 32             | 10    | 15   | 4.2                 | 4              | 18.8           | 14.9                | 3.4            | 36             | 91.5     | 10   | 6   | 117 |
| GN 210-40-V10-N-ZD-* | 40             | 10    | 18.5 | 5.2                 | 5              | 23.6           | 19.1                | 2.8            | 44             | 114      | 12.5 | 7.5 | 228 |
| GN 210-40-V12-N-ZD-* | 40             | 12    | 18.5 | 5.2                 | 5              | 23.6           | 19.1                | 2.8            | 44             | 114      | 12.5 | 7.5 | 228 |
| GN 210-50-V12-N-ZD-* | 50             | 12    | 23   | 6.2                 | 6              | 30.5           | 23.6                | 4              | 55             | 142      | 16   | 9   | 447 |
| GN 210-50-V14-N-ZD-* | 50             | 14    | 23   | 6.2                 | 6              | 30.5           | 23.6                | 4              | 55             | 142      | 16   | 9   | 447 |

## GN 210-VK

| Description           | d <sub>1</sub> | s H11 | b    | d <sub>3</sub> +0.2 | d <sub>4</sub> | d <sub>5</sub> | h <sub>1</sub> -0.2 | h <sub>2</sub> | h <sub>3</sub> | Length l | r    | t   | M <sub>A</sub> max. in Nm | ⚖   |
|-----------------------|----------------|-------|------|---------------------|----------------|----------------|---------------------|----------------|----------------|----------|------|-----|---------------------------|-----|
| GN 210-32-VK8-N-ZD-*  | 32             | 8     | 15   | 4.2                 | 4              | 18.8           | 14.9                | 3.4            | 36             | 91.5     | 10   | 6   | 2.9                       | 115 |
| GN 210-32-VK10-N-ZD-* | 32             | 10    | 15   | 4.2                 | 4              | 18.8           | 14.9                | 3.4            | 36             | 91.5     | 10   | 6   | 2.9                       | 115 |
| GN 210-40-VK10-N-ZD-* | 40             | 10    | 18.5 | 5.2                 | 5              | 23.6           | 19.1                | 2.8            | 44             | 114      | 12.5 | 7.5 | 5.7                       | 225 |
| GN 210-40-VK12-N-ZD-* | 40             | 12    | 18.5 | 5.2                 | 5              | 23.6           | 19.1                | 2.8            | 44             | 114      | 12.5 | 7.5 | 5.7                       | 225 |
| GN 210-50-VK12-N-ZD-* | 50             | 12    | 23   | 6.2                 | 6              | 30.5           | 23.6                | 4              | 55             | 142      | 16   | 9   | 10                        | 442 |
| GN 210-50-VK14-N-ZD-* | 50             | 14    | 23   | 6.2                 | 6              | 30.5           | 23.6                | 4              | 55             | 142      | 16   | 9   | 10                        | 442 |

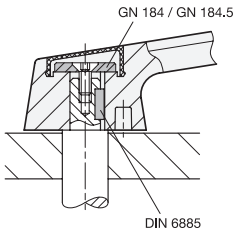
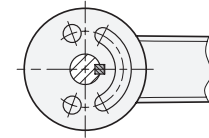
Weight SW





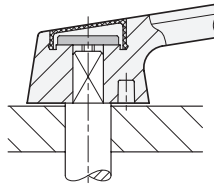
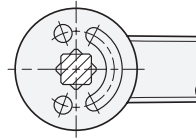
Technical Instructions

Countersunk washer and parallel key

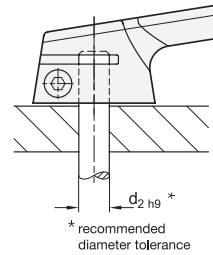
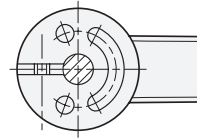


Fastening and torque transmission

Countersunk washer and square driver

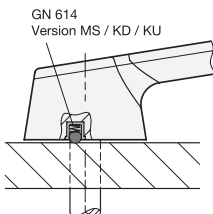
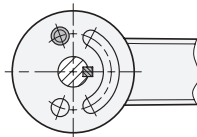


With clamping

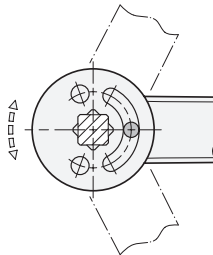


Holding / rotation limiting

Spring plunger



Dowel pin in ring groove



Two dowel pins in ring groove

