

## Mini vacuum cup suspensions - Fixed

**Threaded connection female, steel, aluminium and brass**

### MATERIAL

Stud, threaded sleeve and clamping nuts in nickel-plated brass.  
Air fitting in blue anodised aluminium and AVP steel.

### STANDARD EXECUTIONS

- **VPF-F**: with straight quick fitting.
- **VPF-F-L**: with L-shaped quick fitting.

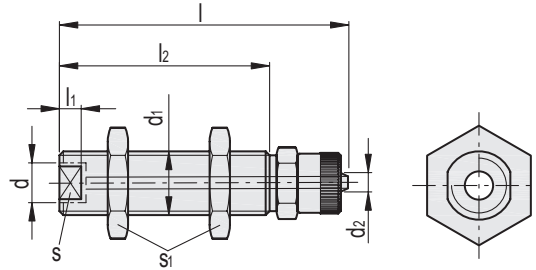
### FEATURES

The VPF vacuum cup suspensions are threaded bushings, with hexagonal tightening nuts for height adjustment and for mounting them on the automation device.

The threaded sleeve is used for fixing the vacuum cup with support; on the opposite side there is the quick fitting for connecting the suction hose.

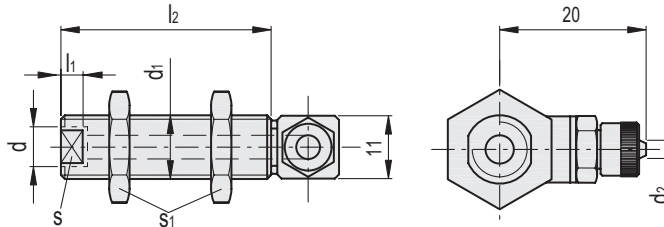
Compatible with 4x6 diameter plastic tube.

See Technical Data for vacuum cups (on page -).



### VPF-F

| Code     | Description    | d  | d1       | d2* | l  | l1 | l2 | s  | s1 | Δ  |
|----------|----------------|----|----------|-----|----|----|----|----|----|----|
| VV.44001 | VPF-70-01-M5-F | M5 | G1/8     | 4   | 46 | 6  | 30 | 8  | 12 | 19 |
| VV.44003 | VPF-70-05-M5-F | M5 | M12x1.25 | 4   | 46 | 6  | 30 | 10 | 19 | 45 |



### VPF-F-L

| Code     | Description      | d  | d1       | d2* | l1 | l2 | s  | s1 | Δ  |
|----------|------------------|----|----------|-----|----|----|----|----|----|
| VV.44002 | VPF-70-01-M5-F-L | M5 | G1/8     | 4   | 6  | 30 | 8  | 12 | 24 |
| VV.44004 | VPF-70-05-M5-F-L | M5 | M12x1.25 | 4   | 6  | 30 | 10 | 19 | 50 |

\* Compatible with compressed air tubes of the diameter in the table.